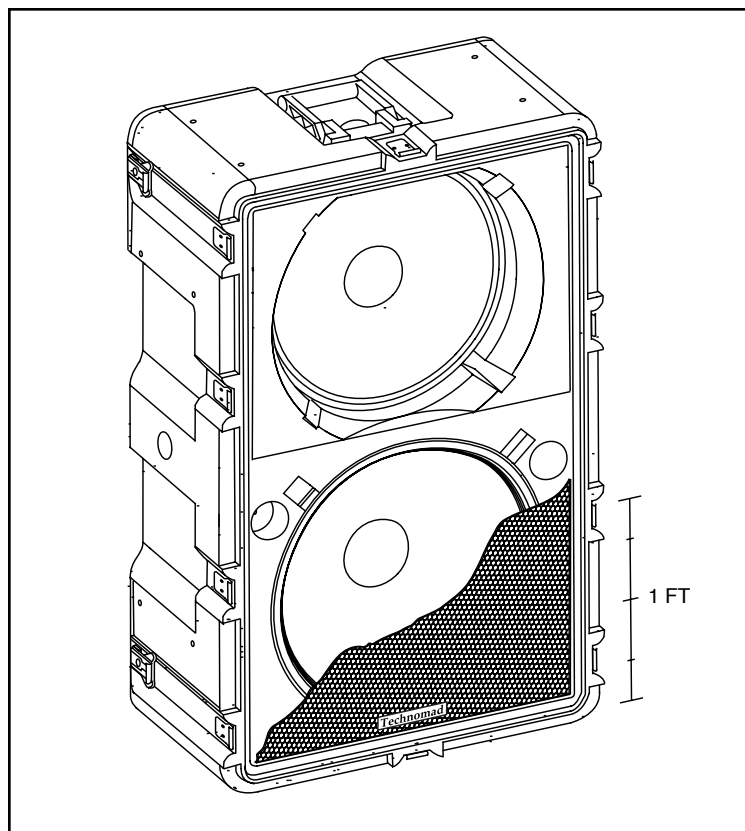


The Chicago 15/12

**AS Series
Tour Model**

Weather Resistant, Self-casing, Subwoofer Loudspeaker System



Shown without WeatherTech™ full-face grill

The Tour Model Chicago 15/12 is designed for use in abusive, real world situations - year-round, indoors or out - without fear of water, salt, sand, insect, temperature, mold, mildew, chemical, condensation, or other sources of damage. Combining super-rugged, U.S. Armed Forces road case technology with a number of acoustic innovations, Technomad builds uniquely compact and durable loudspeakers that are very powerful and musically accurate. Technomad loudspeakers are impact, UV light, and fire resistant, as well as water-tight when the protective lid is attached.

The Tour Model Chicago 15/12 is designed for maximum flexibility and ease of use. It can be easily stacked or tripod-mounted with 1.5" diameter stand-mount sockets molded into the cabinet on all four sides. With threaded insert flypoints on all sides, a Chicago 15/12 can be easily and accurately be flown. Threaded inserts on the rear of the loudspeakers allow the Chicago 15/12 to be wall-mounted using Omnimount™ 300 series brackets. The included lid protects the speaker during shipping and latches onto the back of the cabinet when the unit is being

Fully weatherproof construction

One-piece, 1/2" thick molded cabinet

Molded-in colors will not crack or fade

Comprehensive warranty: 10 year cabinet, 5 year hardware, 2 year electronics

Articulate low end response

Self-casing

Molded in 3/8-16 T-nuts allow for flying and bracket mounting

1.5" stand-mount socket on each side for horizontal and vertical deployment

MonitorTilt™ sockets on rear

Large grip handles

Three layer, chemically treated WeatherTech™ grill

Self-draining cabinet design

Twelve (12) optional cabinet colors

Mil-Spec 810E compliant

used. A large handle at each end makes carrying the Chicago 15/12 easy. All hardware, including the grill is black stainless steel to prevent corrosion and is recessed to prevent damage during shipment. All units stack together with interlocking ribs during transit. Like size Tour Model cabinets lock together.

The Chicago 15/12 offers outstanding low-frequency performance in demanding applications. Technomad's cabinet tuning delivers exceptional bass extension, articulation, and pitch accuracy without compromising the portability or installability of the Chicago 15/12. Due to the Chicago's extremely small size, shallow depth and very powerful output, Chicago subwoofers can be installed in small areas- within walls, scenery, shrubbery, etc - providing even bass coverage over larger areas. This eliminates the need for huge, expensive subwoofer cabinets that take up large amounts of floor space.

Technomad Chicago subwoofers are used world-wide in applications such as night-clubs, concert halls, and theme parks.

Technomad
THE TOUGHEST LOUSPEAKERS IN THE WORLD

37 Harvard Ave, Suite 2, Brookline MA 02445 USA
email: info@technomad.com
www: <http://www.technomad.com>
phone: 800.464.7757 fax: 617 424 8233

Specifications

Chicago 15/12

Audio Specifications

Frequency Response	45 Hz- 800 Hz (+/- 2 dB)
	35 Hz- 800 Hz (+/- 10 dB)
Maximum Continuous Power ¹	800 watts
Maximum Peak Power ¹	1200 watts
Recommended Amplifier Power*	800 watts
Sensitivity **	102 dB SPL
Maximum Output (long term) ¹	130 dB SPL
Maximum Output (peak)	132 dB SPL
HF Dispersion	-
Nominal Impedance	6 ohms

Signal Chain

HF	N/A
MF	12" LF Driver
LF	15" LF Driver
Connectors	2 x Neutrik™ NL4MP Speak-on, 1 per side, recessed
Crossover	N/A
70-Volt (option)	300 watt fixed tap

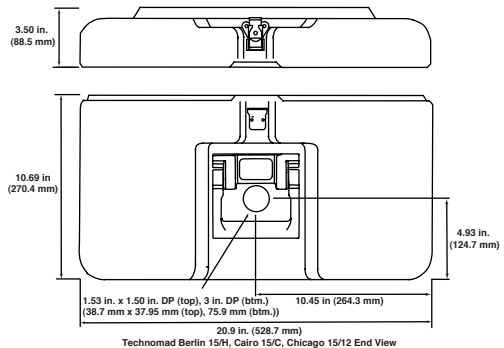
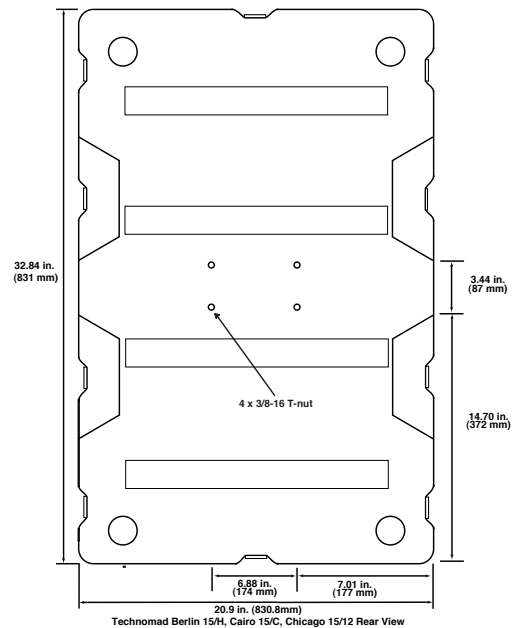
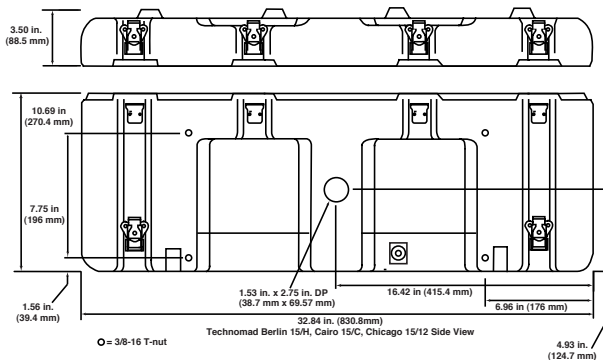
Physical Specifications

Height	32.84"	83.8 cm
Width	20.9"	52.8 cm
Depth w/o lid	10.7"	27.0 cm
Weight	97 lbs	44.0 kg
Shipping Weight	99 lbs	44.9 kg
Fittings	16 x 3/8-16 threaded inserts (4 per side) 4 x 3/8-16 threaded inserts on back	
Standmount Sockets	4- One per side, 1.5" diameter (standard)	
Handles	2- Large Easy-Grip	
Cabinet	Mid-density Polyethylene	
Grill	Powder coated steel (Black standard)	

¹ Based on ALMA EIA test 426B

* RTA Total output axial 1W@1M

** Based on Maximum Continuous Power rating



Architectural and Engineering Specifications

The loudspeaker system shall be subwoofer consisting of one 12" low frequency cone type transducer and one 15" low frequency cone type transducer in a vented direct radiating enclosure.

The system shall meet the following performance criteria:
Frequency Response: 45 Hz - 800 Hz. Power Handling: 800W.
Rated impedance shall be 6 ohms.

The system shall include 2 Neutrik™ 4MP connectors. The cabinet shall be molded from mid-density, (100% recycled if black) polyethylene. All cabinet dyes shall be non-heavy metal based.

The cabinet shall meet Mil-Spec 810E and be ATA-III compliant. The cabinet shall have a 10 year warranty.

The system shall include 1.5" stand mount sockets on four sides. The system shall have two spring-loaded handles. The system shall have a fully gasketed lid. All drivers shall be protected by a three-layer chemically treated grill system. All hardware will be stainless steel.

The loudspeaker system shall be the Technomad Chicago Tour Model 15/12.

Technomad
THE TOUGHEST LOUSPEAKERS IN THE WORLD

37 Harvard Ave, Suite 2, Brookline MA 02445 USA
email: info@technomad.com
www: http://www.technomad.com
phone: 800.464.7757 fax: 617 424 8233