

# KP-46WT500

Hi-Scan 1080i™ 16:9 Projection Television



Optional Stand Shown

## KEY FEATURES

- Hi-Scan® 1080i Display
- 46" Table Top Design
- HD MICROFOCUS™ CRT and Lens System
- HD Detailer™ Wideband Video Amplifier
- DVI-HDTV Interface

**Hi-Scan**  
1080i

**DRC**  
Digital Reality Creation

**CineMotion**  
Reverse 3:2 pull down technology

**MID** Multi Image Driver

## ADDITIONAL FEATURES

### Audio/Video Features

- DRC™ MultiFunction Circuitry (960i, 480i)
- CineMotion™ Reverse 3-2 PullDown Technology
- MID™ (Multi Image Driver-X)
- Auto SAP
- Auto Mute (Tuner)
- DAC Speaker System (20W x 2)
- Simulated Surround Sound
- TruSurround™ SRS 3D Audio Effect
- Steady Sound® Auto Volume Control with BBE
- Fixed/Variable Audio Out
- Speakers On/Off
- Energy Star® Compliant
- Twin-View™ Two Tuner Picture-and-Picture
- Picture Freeze
- Channel Jump

- Auto Wide/Wide Screen Mode
- XDS Banner
- Flash Focus® Digital Convergence
- 3D Digital Comb Filter
- First Surface Mirror
- High Contrast Lenticular Screen
- Fine Pitch Fresnel Screen
- Built-in High Contrast Protective Screen
- Auto Pedestal Clamp
- Auto White Balance
- Dynamic Focus™ Circuitry
- Dynamic Picture™ Processor Circuitry
- Trinitone® Color Temperature
- Vertical Aperture Compensation
- Vertical Center Adjustment
- S-Video Detection

### Convenience Features

- Auto Channel Program
- Caption Vision (CC)
- Channel Fix
- Channel Label
- Channel Skip/Add
- Clock/Timer (Two Event)
- Favorite Channel with Preview
- On Screen Display - English/Spanish/French
- Program Palette™ Presets
- Scrolling Channel Index™
- Sleep Timer
- Speed Surf™ Channel Selection
- V Chip Parental Control
- Video Label

**TruSurround™**  
with **SRS** (S) (C) (S)

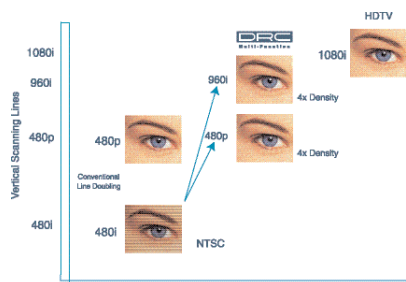
**Energy** Star

# KP-46WT500

Hi-Scan 1080i™ 16:9 Projection Television



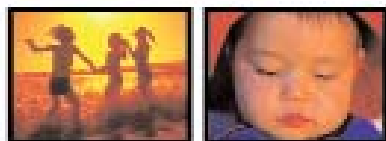
## KEY TECHNOLOGY



**Digital Reality Creation™ MultiFunction** This Sony proprietary technology displays four times the picture resolution compared to conventional TV's for the very best in picture quality. A basic distraction of today's "NTSC" television system is its scanning structure of 480i scanning lines of interlaced video. The bigger the screen size, the more apparent scanning lines become. DRC™ MultiFunction circuitry minimizes the visibility of those annoying scan lines producing a picture that rivals High Definition. Unlike conventional line doublers, this real time digital bitmapping process replaces analog NTSC patterns with their High Definition digital equivalents. The result is four times the picture density of conventional television.

**CineMotion™ Reverse 3-2 Pull-Down Technology** Is a fixed algorithm irrespective of source which preserves the integrity of movie film frames to create the best possible image.

**Multi-Image Driver (MID™-X)** With Sony's flexible Twin-View™ 2 Tuner Picture and Picture a person can watch two full motion pictures side by side. Together Twin-View and Sony's proprietary MID-X allows the customer to watch analog (NTSC) along side of HDTV at the same time on the same screen. This circuitry also allows you to zoom in and out of these images to customize the Picture and Picture environment. Also, with MID-X, both images are improved to 480 progressive image quality.



**HD Detailer™ Wide Band Video Amplifier** When a video signal leaves the video processor, it is only a few volts, which is not enough to drive the CRT. The signal then goes through a video amplifier to deliver a usable signal to the CRT. The bandwidth rating of this video amp is very important, although the original video source may contain a great level of detail (e.g. higher frequency data from an HD source), if the video amp is rated at a lower frequency, it will not allow this greater detail to be shown.

**DVI - HDTV Interface (Digital Visual Interface)** The DVI - HDTV Interface has been added for the latest generation in high definition television connectivity. A single wire delivers a full digital, uncompressed HD signal that can be received from any DVI set top box.

## ADDITIONAL FEATURES

Specifications	General	Accessories	Weights & Measures (Approx)
<b>Inputs and Outputs</b> <ul style="list-style-type: none"> <li>• Component Video (Y/P<sub>b</sub>/P<sub>r</sub>) Inputs x 2 HD Capable</li> <li>• DVI-HDTV Interface</li> <li>• Front A/V Input x 1</li> <li>• Front S-Video Input x 1</li> <li>• Composite Video Input x 3</li> <li>• S-Video Input x 2</li> <li>• RF Input x 2</li> <li>• Control S In/Out</li> </ul>	<ul style="list-style-type: none"> <li>• Power Requirements: AC120V, 60Hz</li> <li>• Power Consumption (Standby): W 0.95</li> <li>• Power Consumption (in Operation): W 260</li> </ul>	<b>Supplied Accessories</b> <ul style="list-style-type: none"> <li>• Instruction Manual</li> <li>• Remote Control</li> <li>• AAA Batteries (2)</li> </ul> <b>Optional Accessories</b> <ul style="list-style-type: none"> <li>• A/V Stand SU-46WT5</li> </ul>	<ul style="list-style-type: none"> <li>• Dimensions (Approx): (W x H x D): 42.8" x 40.2" x 24" (1086 x 1020 x 609mm)</li> <li>• Weight: 143 lbs. (65kg)</li> </ul>