

CF/CFX

LOUDSPEAKER SYSTEMS



POWER PERFORMANCE RELIABILITY



PUT THE CF/CFX SERIES TO THE ULTIMATE TEST: listening in a real world environment

No matter how excellent its performance, a loudspeaker system alone cannot deliver the kind of sound quality that wins repeat business. The acoustical complexities of typical public listening spaces can easily overwhelm the performance of the most advanced integrated loudspeaker system.

Since 1990, we have been the exclusive worldwide distributor for EASE, Acoustic Design Ahnert's industry standard suite of acoustic simulation programs. We're also fortunate to have close relationships with leading audio designers worldwide.

The CF/CFX Series incorporates many lessons learned from EASE – and from the consulting community – about sound system performance in real acoustic spaces. With the help of this invaluable experience and feedback, we have developed a broad range of systems that provide effective solutions for almost any sound reinforcement problem.

BEFORE WE'LL SHIP YOUR LOUDSPEAKERS, THEY HAVE TO MEET OUR STANDARDS

Every CF/CFX Series loudspeaker system is designed to the highest standards of innovation and quality – ours. They're built to the same exacting standards we use for all our products, and then rigorously tested before shipment to make sure that they live up to the distinguished name we put on every box, and inside every loudspeaker: Renkus-Heinz. We know your reputation depends on reliable, consistently superior performance – and so does ours.



OUR GOALS - ADVANCING SOUND, PROVIDING SOLUTIONS

INTRODUCING THE CF/CFX Modular Point Source Array

Our quest for significant, measurable and audible improvements ranges from classic acoustical physics to advanced digital technologies. So far, six of our innovations have been awarded US patents. Each discovery opens new avenues for investigation, fresh opportunities to enhance the accuracy, efficiency and reliability of Renkus-Heinz loudspeaker systems.

The CF/CFX Modular Point Source Array is the latest product of this quest for excellence. Designed for power, portability and versatility, the CF/CFX101LA from Renkus-Heinz is the ideal solution for today's small and mid-sized venues, including auditoria, night clubs, theaters and houses of worship. With the flexibility to be flown, ground-stacked or pole-mounted, the CF/CFX101LA delivers the performance and pattern control of a line array, with the clarity of a point source system, in a compact, sleek and affordable design that's equally at home as a portable system or a permanent installation.





BUILT IN VERSATILITY

CF and CFX Series loudspeakers are equipped for easy use in both portable and permanent applications.

All are available with either a durable black or white finish or as an option, in custom colors. All except for the floor monitor, the stairstep loudspeaker and the miniature CFX41 are also available with weather resistant treatment

All are equipped with U-Bracket attachment points for easy wall and ceiling mounting in fixed installations, except for the floor monitor, the subwoofers and the stairstep loudspeaker.

All are also provided with 6 UMH (Universal Mounting Hardware) attachment points making it easy to fly the cabinets using eye bolts, except for the floor monitor, the stairstep loudspeaker and the miniature CFX41.

All are also available with attachment plates for Omnimount wall and ceiling mounting hardware, except for the floor monitor, the stairstep loudspeaker and the miniature CFX41.

The CF/CFX18S and the CF/CFX12S subs tripod sockets are top mounted to allow their use as a stand base.

All CFX models are provided with both looping 4-pin Neutrik SpeakOn type connectors and screw type terminal strips. Self-powered CF models have looping 3-pin XLR type connectors.

All are equipped with a Tripod socket to allow pole mounting in portable use, except for the miniature CFX41, the compact CF/CFX61, the stairstep loudspeaker and the floor monitor.

All have handles for easy portability, for the miniature CFX41, the compact CF/



CF/CFX61

- High Output, Small Enclosure •
- Flexible Input Configurations •
- Rotatable 150° by 60° Complex Conic Horn •
- 80 Hz to 20 kHz Frequency Range •
- 114 dB Peak SPL Rating •
- 120 W @ 16 Ohms power Rating •
- 1" Extended Range Titanium HF Driver •
- Heavy-Duty 6.5" Woofer •
- RHAON Ready •



Dimensions (H x W x D)
inch: 16 x 9 7/8 x 11
cm: 40.6 x 25 x 28

Weight (lbs/kg)
CF61-2 & CF61-2R: 23.2 / 10.5
CFX61: 21.2 / 9.6

CF/CFX81

- High Output, Small Enclosure •
- Flexible Input Configurations •
- Rotatable Complex Conic Horn •
- 150° x 60° Coverage •
- 70 Hz to 20 kHz Frequency Range •
- 117 dB Peak SPL Rating •
- 200 W @ 8 Ohms Program Power Rating •
- 1" Extended Range Titanium HF Driver •
- Heavy-Duty 8" Woofer •
- RHAON Ready •



Dimensions (H x W x D)
inch: 19 7/8 x 11 1/8 x 12 1/4
cm: 50.5 x 28.2 x 31.1

Weight (lbs/kg)
CF81-2 & CF81-2R: 27.2 / 12.3
CFX81: 25.2 / 11.4

CF/CFX121

- Compact Design •
- Flexible Input Configurations •
- Rotatable 90° x 60° Complex Conic Horn •
- Choice Of 90° x 60° or 120° x 60° Coverage •
- 70 Hz to 18 kHz Frequency Range •
- 128 dB Peak SPL Rating (on CFX121) •
- 500 W @ 8 Ohms (or 4 Ohms) Pgm Pwr Rating •
- 2" Extended Range Titanium HF Driver •
- Heavy-Duty 12" Woofer •
- RHAON Ready •



Dimensions (H x W x D)
inch: 23 1/8 x 15 3/4 x 14 1/2
cm: 58.7 x 40 x 36.8

Weight (lbs/kg)
CF121-2/2R: 54.4 / 24.7
CF121-5/5R/52R: 56.4 / 25.7
CFX121/-8: 52.4 / 23.8

CF/CFX151

- Compact Design •
- Flexible Input Configurations •
- Rotatable Complex Conic Horn •
- Choice of 90° x 40° or 60° x 40° Coverage •
- 60 Hz to 18 kHz Frequency Range •
- 131 dB Peak SPL Rating On CFX151 •
- 700 W @ Ohms (or 4 Ohms) Pgm Pwr Rating •
- 1" Extended Range Titanium HF Driver •
- Heavy-Duty 15" Woofer •
- RHAON Ready •



Dimensions (H x W x D)
inch: 29 3/8 x 19 x 16 7/8
cm: 74.6 x 48.3 x 42.8

Weight (lbs/kg)
CF151-2/2R: 72.2 / 32.8
CF151-5/5R/52R: 74.2 / 33.7
CFX151/-8: 70.2 / 31.8

CF/CFX101LA

- Dual 1" HF Drivers, High Power 10" Woofer •
- 60 Hz to 20 kHz Frequency Range •
- 128 dB Peak SPL Rating •
- 500 W @ 8 Ohms Power Rating •
- Exclusive Tuned Conic Diverter •
- Tight Pattern Control •
- Reliable, Easy-To-Use Hardware •
- Flexible Input Configurations •
- RHAON Ready •



Dimensions (H x W x D)
inch: 13 x 23 3/4 x 15
cm: 33 x 60.3 x 38.1

Weight (lbs/kg)
CF101LA-5/-5R: 56 / 25.5
CF101LA-5/2R: 57 / 26
CFX101LA-8: 51 / 23.3

CF/CFX15S

- Powerful 15" Subwoofer •
- Outstanding Versatility •
- 40 Hz to 120 Hz Frequency Range •
- 129 dB Peak SPL Rating On CFX15S •
- 800 W @ 8 Ohms Program Power Rating •
- Flexible Input Configurations •
- Neodymium Magnet Woofer Structures •
- RHAON Ready •



Dimensions (H x W x D)
inch: 19 x 23 1/4 x 22 1/2
cm: 48.3 x 59 x 56.5

Weight (lbs/kg)
CF15S-5/-5R: 114 / 51.7
CFX15S-8: 112 / 51

CF/CFX12S

- Powerful 12" Subwoofer •
- Flexible Input Configurations •
- 40 Hz to 120 Hz Frequency Range •
- 127 dB Peak SPL Rating •
- 500 W @ 8 Ohms (or 4 Ohms) Power Rating •
- High Power, High Performance •
- Built-In Low-Pass Filter •
- RHAON Ready •



Dimensions (H x W x D)
inch: 23 1/8 x 15 x 17 1/4
cm: 58.7 x 38.1 x 43.8

Weight (lbs/kg)
CF12S-5/2R: 55 / 25
CFX12S/-8: 50 / 22.7

CF/CFX18S

- Powerful 18" Subwoofer •
- Flexible Input Configurations •
- 35 Hz to 100 Hz Frequency Range •
- 128 dB Peak SPL Rating On CFX18S •
- 800 W @ 8 Ohms (or 4 Ohms) Power Rating •
- High Power, High Performance •
- Built-In Low-Pass Filter •
- RHAON Ready •



Dimensions (H x W x D)
inch: 29 1/2 x 22 1/4 x 23 1/2
cm: 75 x 56.5 x 59.7

Weight (lbs/kg)
CF18S-5/5R: 94.6 / 42
CFX18S/-8: 90.6 / 41.1

CFX41

- Outstanding Performance, Miniaturized Enclosure •
- 4" Extended-Range Coaxial Transducer •
- 1" Extended Range Soft-Dome Tweeter •
- 100 Hz to 20 kHz Frequency Range •
- 109 dB peak SPL rating •
- 50 W program @ 8 Ohms power rating •
- Advanced Crossover Network •
- Vented Enclosure •



Dimensions (H x W x D)

inch: 6 x 7 x 6

cm: 15.2 x 17.8 x 15.2

Weight (lbs/kg)

CFX41: 4.8 / 1.9

CF42 & CFX42

Stairstep Loudspeaker

- High Output, Small Enclosure •
- Wide-Angle 150° x 60° Coverage •
- 300 Hz to 20 kHz Frequency Range •
- 122 dB Peak SPL Rating •
- 200 W Program @ 16 Ohms Power Rating •
- 1" Extended Range Titanium HF Driver •
- Dual Heavy-Duty 4" Woofers •
- Heavy 18 Gauge Metal Back Box (Optional) •



Dimensions (H x W x D)

Enclosure (Inch): 5 5/8 x 16 7/8 x 13 3/16

(cm): 14.2 x 43 x 33.5

Black Box (Inch): 5 5/8 x 16 7/8 x 13 3/16

(cm): 14.2 x 43 x 33.5

Weight (lbs/kg)

CF42: 18.76 / 8.5

CFX42: 16.76 / 7.6

CF121M-2/2R & CFX121M

Floor Monitor

- Compact Design •
- Flexible Input Configurations •
- Rotatable Complex 90° x 60° Conic Horn •
- 70 Hz to 18 kHz Frequency Range •
- 128 dB Peak SPL Rating on CFX121M •
- 500 W @ 4 Ohms Program Power Rating •
- 2" Extended Range Titanium HF Driver •
- Heavy-Duty 12" Woofer •



Dimensions (H x W x D)

inch: 23 1/8 x 15 3/4 x 14 1/2

cm: 58.7 x 40 x 36.8

Weight (lbs/kg)

CF121M-2/2R: 54.4 / 24.7

CFX121M: 52.4 / 23.8

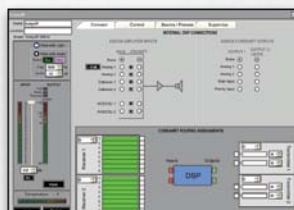


RENKUS-HEINZ AUDIO OPERATIONS NETWORK

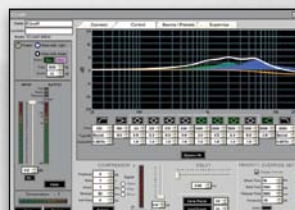


Passive, powered or networked, you can choose the system configuration that meets your needs at any time. Whenever you are ready for Ethernet audio networking, your CF loudspeakers are too. At the factory or in the field, the CFX passive connector plate can be easily replaced by one of five PF Series intelligent Class D digital amplifiers.

A Windows GUI empowers RHAON users to connect each Renkus-Heinz powered loudspeaker to a CobraNet network, control 8 parametric EQ filters, up to 340 ms of delay and dynamics processing via onboard DSP, and supervise both the amplifier and drivers.



Connect



Control



Supervise

COMPLEX CONIC HORNS: Naturally Superior Design



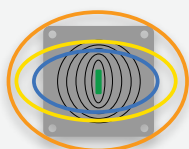
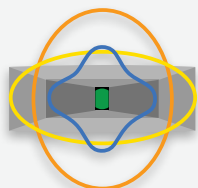
Renkus-Heinz innovation takes many forms. None is as well known or widely respected as our Complex Conic horns. Their unique design is based on the spherical expansion of the acoustic pressure wave, so they don't distort sound while controlling it the way ordinary horns can.

The Complex Conic flare changes smoothly from a narrow diffraction slot, through an oval expansion, to a circular mouth. There's no "pattern flip" at the low end of the range, or "feathering" at the high end – just smooth and consistent pattern control. Complex Conic Horns work better than ordinary horns, and they sound more natural too with lower distortion and minimal coloration.



Constant Directivity Horn

Complex Conic Horn

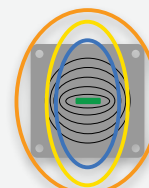
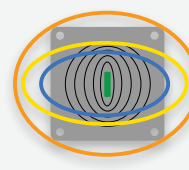


Coverage Patterns



Standard Coverage

With Horn Rotated 90°



SELF POWERED & EXTERNALLY POWERED

The CF/CFX Series is available as a passive loudspeaker for use with external amplification, or with Renkus-Heinz's highly acclaimed PF Series Intelligent Digital Amplification. The PF Series delivers audiophile-quality performance, ultra-low distortion and unparalleled efficiency in a sleek, lightweight design.





Renkus-Heinz, Inc. Headquarters, Foothill Ranch, California, USA

Working together, there's no problem we can't solve, no schedule we can't meet, no project we can't take to a higher level of excellence, from the White House to the Olympic SuperDome, from corner churches to major metropolitan concert halls. Much as we love technology, our greatest satisfaction comes through helping people communicate through music, dance, theater, or the power of a new idea brilliantly expressed. When we make those kinds of connections, there's nothing more exciting – or more powerful.

Here are some of the unique Renkus-Heinz technologies we use in our loudspeaker systems:



Patented CoEntrant Topology integrates midrange and high frequency drivers into wide-band point sources.



Complex Conic Topology, the first new approach to horn design in decades, has proven its superior performance worldwide.



TRAP (TRue Array Principle) design aligns acoustic centers so loudspeaker clusters produce coherent output.



Reference Point Array engineering optimizes the entire signal chain from line level to listener for unprecedented performance.

