



TECHNICAL SPECIFICATIONS SB48

DESCRIPTION

A dedicated subwoofer with dual 8-in transducers in a rectangular enclosure. Each driver is in its own optimally vented subenclosure.

APPLICATIONS

The SB48 provides high definition sub bass response in an exceptionally compact enclosure. Tuned enclosure venting extends LF response and minimizes driver strain. Comprehensive mounting/suspension points. Six year warranty.

Applications include:

- Ballroom Events
- MultiMedia
- Boardrooms
- Restaurants
- Small Retail Spaces

DESCRIPTIVE DATA

Part Number	999050
Product Group	L
Components & Loading	2x 8-in Vented
System Configuration	Dedicated Subwoofer
Recommended High-Pass Frequency (24 dB/Octave)	28Hz
Cabinet Type (shape)	Rectangular
Enclosure Materials	Baltic Birch Plywood
Finish	Black Catalyzed Polyurethane
Connectors	2x Neutrik NL4 Speakon 2-Terminal Barrier Strip
Suspension Hardware	(13) 3/8"-16 threaded mounting/suspension points (4 each top and right side, 2 each bottom and left side, 1 back)
Grill	Vinyl Coated Perforated Steel



NOMINAL DATA

Frequency Response (Hz)			
	±3 db	38Hz to 200Hz	
	-10 dB	28Hz	
Axial Sensitivity (dB SPL/1 Watt/1m)			
		92	
Impedance (Ohms)			
		8 (2x 4)	
Power Handling (Watts)			
	AES Standard	400	
Calculated Maximum Output (dB SPL, @ 1m)			
	Peak	124.0	
	Long Term	118.0	
Dimensions		inches	millimeters
	Height	12.5	318
	Width	22.5	572
	Depth	19.75	502
Weights		pounds	kilograms
	Net Weight	52	23.7
	Shipping Weight	57	25.9



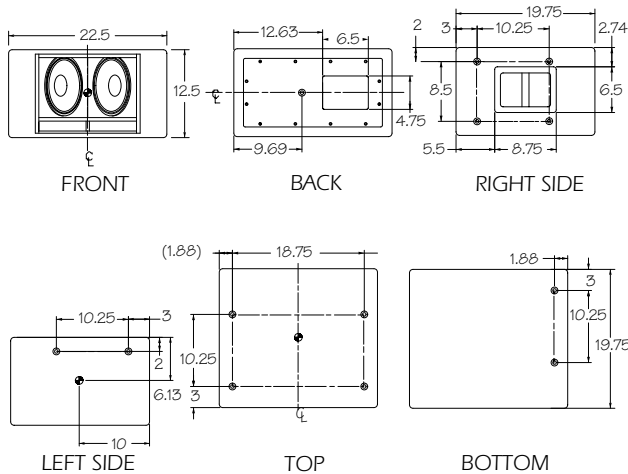


TECHNICAL SPECIFICATIONS SB48

DIMENSIONAL DRAWING

SB48

- MOUNTING POINT: 3/8"-16 THREADED HOLE.
- CABINET IS SYMMETRICAL ABOUT DESIGNATED CENTERLINES
- CENTER OF BALANCE.
- ALL DIMENSIONS IN INCHES UNLESS OTHERWISE NOTED.



510140
EXP 3/9/97 SHB

SERVICE ITEMS

Sub: Complete Cone Driver

EAW Part No. 804009

Filter/Crossover Network: Complete Assembly

EAW Part No. 201307

APPLICATIONS

The sub bass loudspeaker systems shall incorporate 2x 8-in LF transducers mounted in separate vented subenclosures tuned for optimum low frequency response.

System frequency response shall vary no more than ± 3 dB from 38Hz to 200Hz measured on axis. The loudspeaker shall produce a Sound Pressure Level (SPL) of 92 dB SPL on axis at 1 meter with a power input of 1 Watt, and shall be capable of producing a peak output of 124 SPL on axis at 1 meter. The loudspeaker shall handle 400 Watts of amplifier power (AES Standard) and shall have a nominal impedance of 8 (2x 4) Ohms.

The loudspeaker enclosure shall be rectangular in shape. It shall be constructed of 15mm thickness void-free cross-grain-laminated Baltic birch plywood and shall employ extensive internal bracing. It shall be finished in black catalyzed polyurethane. Input connectors shall be 2-terminal barrier strip. A total of thirteen 3/8"-16 threaded mounting/suspension points (4 each top and right side, 2 each bottom and left side, 1 back) shall be provided. The front of the loudspeaker shall be covered with a vinyl coated perforated steel grill.

The sub bass loudspeaker shall be the EAW model SB48.